

# Auburn Union School District

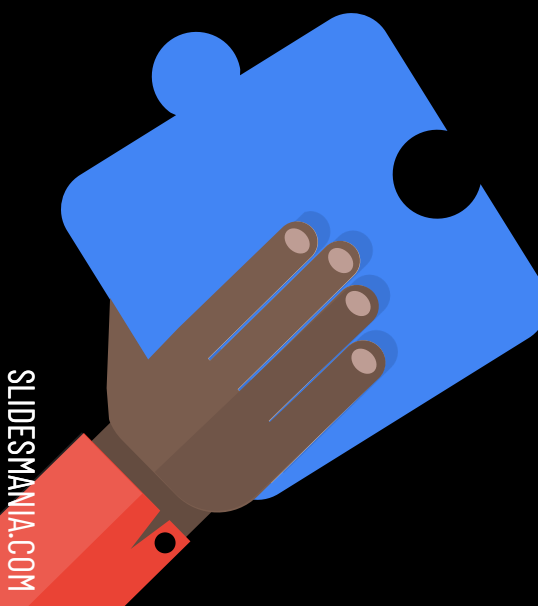

We place each child at the heart of every decision

## Superintendent's Reopening Update: Moving to Phase 3

Board of Education  
Special Board Meeting  
January 7, 2021



# Guiding Principles

- **Safety**-- *Guided by Research and Science*
    - Planning is based on current public health guidelines and are subject to change, which may lead to Hybrid Models, Distance Learning or loosening of guidelines and return to full-time in person instruction officials to ensure health and safety of students, staff and the community
  - **Equity**-- *Propel and Expand Equity*
    - Equitable outreach, services, and supports for all students and families
  - **Flexibility** -- *Reimagine, Rethink, and Redesign*
    - Expect Change and expect school to look different
    - Empower teachers, staff, and administrators to innovate
- 
- 

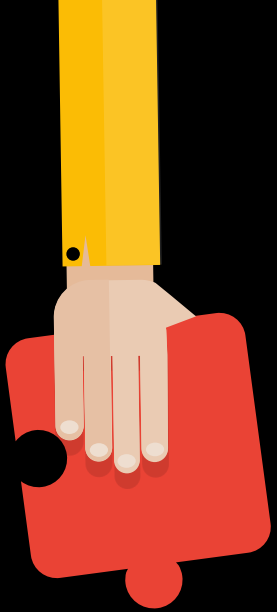
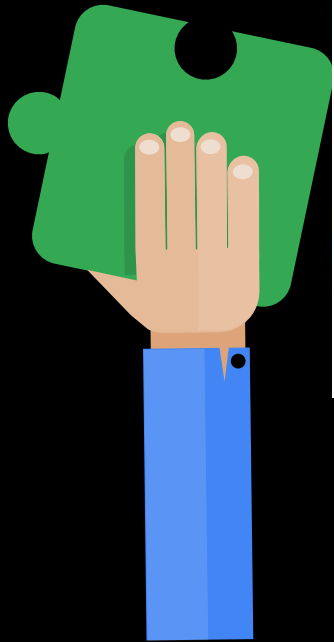
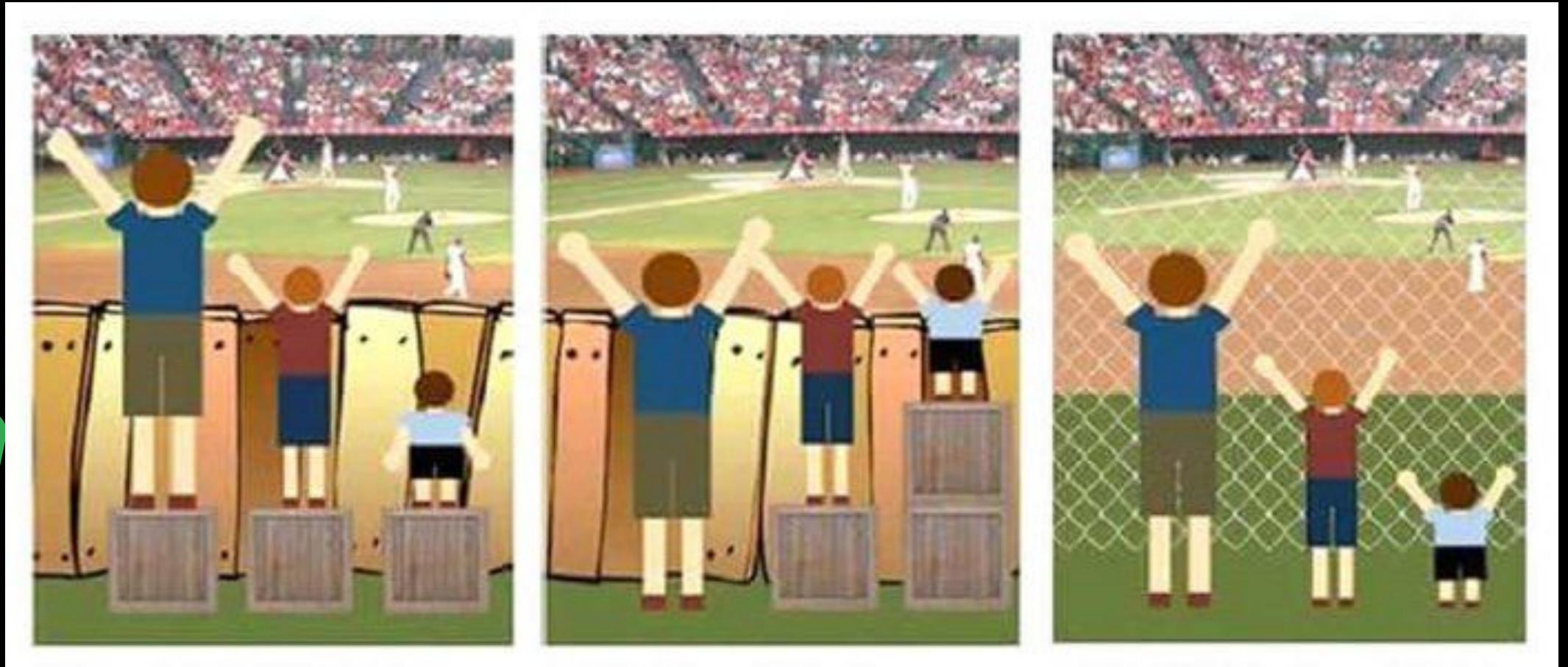


# Guiding Principles

- **School Culture** -- *Inclusive, Caring, and Supportive*
  - Set high expectations for all students
  - Quality teaching and learning regardless of modality - in-person, online, or a blend of the two
  - Support all students' social and emotional needs
- **Communication** -- *Consistency and Transparency*
  - Timely, consistent communication to all stakeholders

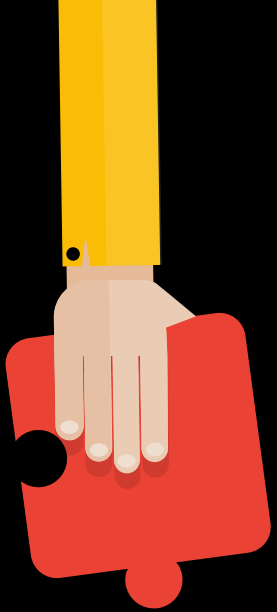


# Equity Lens

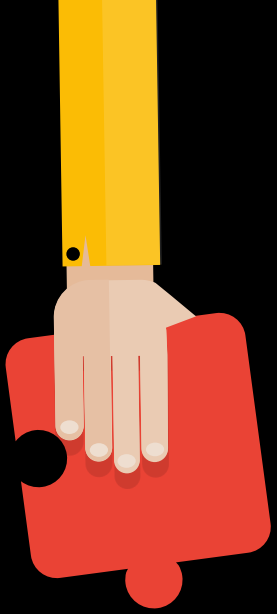


# Equity Lens

We have been seeing an increase in the number of homeless families and eviction notices during and after break. There has also been an increase in foster youth as a lack of home stability and unemployment continues to be a challenge



# Equity Lens

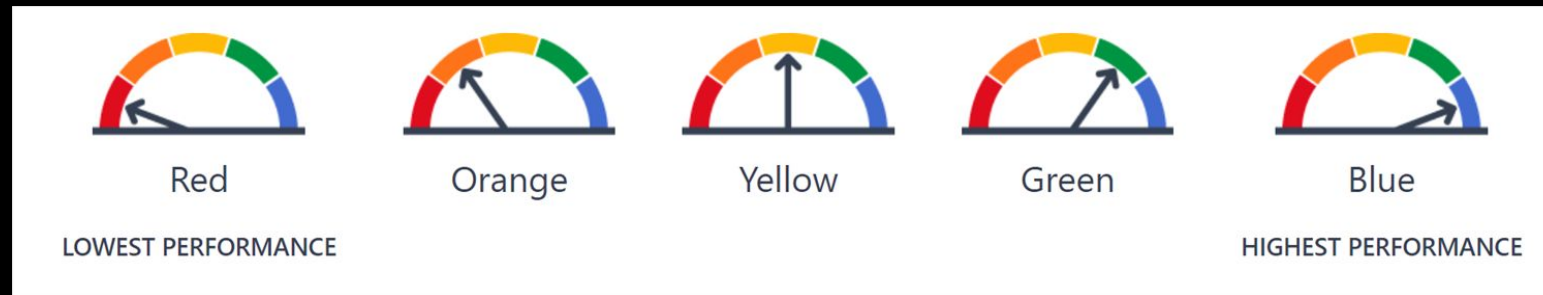


A recent research report by NWEA stated learning loss will significantly impact low-income and underserved populations as they are less likely to have access to resources conducive to a remote learning environment, such as: a quiet space to work, high speed internet access, and adult support during instruction.




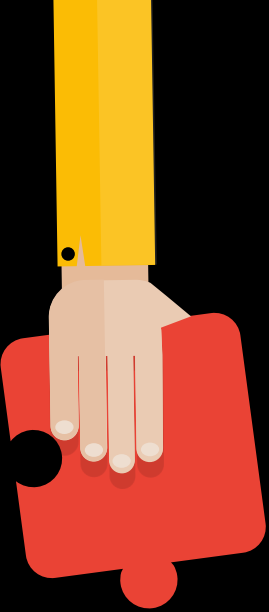
# Equity Lens

The colors highlighted next to each districts scores represent the CA Dashboard colors on California’s accountability and continuous improvement system and provides information about how districts and schools are meeting the needs of California’s diverse student population. It is a color-coded system Red, Orange, Yellow, Green and Blue.



2019 Data	ELA	Math	Poverty	Students with Disabilities	ELL
State	51%	40%	61%	about 12%	19%
Auburn	38%	35%	59%	17%	18%
Bowman	72%	57%	31%	not listed on CDE	4%
Placer Hills	61%	55%	33%	13%	0.4%
Loomis	73%	67%	20%	9%	3%

# Equity Lens



“Governor Newsom agrees with parents, educators ,  
policymakers and pediatricians that in-person is the best  
setting to meet not only the core learning needs of students,  
but also their mental health and social-emotional needs. It’s  
especially important for our youngest kids, students with  
disabilities, and those already disproportionately impacted  
by the pandemic. Resuming in-person instruction is critical  
for kids, families, and communities throughout the state.”



# Where We Have Been



Shifted to  
Distance  
Learning



AUSD and AUTA  
MOU regarding  
impact and effects  
of COVID 19



AUSD and CSEA  
MOU regarding  
changing hours  
due to COVID for  
particular positions



AUSD and CSEA  
MOU regarding  
impacts and  
effects of COVID

# Where We Have Been



Establishment of Closing/Start of Schools Committee established



Resolution passed regarding Distance Learning Grading Policy



First monthly Town Hall Meeting to gather input from stakeholders



First Draft of Reopening Plan presented to staff, Board of Trustees, families and Community

# Where We Have Been



AUSD and CSEA  
MOU regarding  
changing hours  
due to COVID for  
Child Nutrition to  
allow for feeding  
the community



Updated  
Reopening Plan  
presented to  
Board of Trustees



LCAP Equity  
Assurance Report



Extended  
retirement  
incentive due to  
COVID

# Where We Have Been



Governor Newsom announced Placer County schools will start 2020–2021 school year in Distance Learning Format



Updated Reopening Plan presented to Board of Trustees, families and community



AUSD and AUTA MOU regarding the impacts and effects of reopening school



First day of School in Distance Learning format  
Alta Vista Virtual Academy launched

# Where We Have Been



First of four Learning Continuity and Attendance Plan Stakeholder Engagement meetings



AUSD and AUTA MOU regarding the impacts and effects of reopening school



In-person learning availability announced for all Placer County Schools



Direction given to Superintendent from Trustees to open no later than October 19 in phases beginning with a Hybrid Model in accordance with AUSD and AUTA MOU

# Where We Have Been



AUSD and AUTA  
MOU regarding  
impact and  
effects of  
in-person  
assessments for  
students with IEP's



AUSD and CSEA  
MOU regarding  
impacts and  
effects of safety  
due to COVID 19



Hired additional  
short term  
custodians due to  
COVID 19



Hybrid Model  
commences

# Where We Have Been



Resolution regarding approval of return to in person instruction



Increased substitute pay due to COVID



AUSD and AUTA MOU regarding Hybrid Instruction



Pressed pause to move to Phase 3

# Where We Have Been



Presented Reopening update to Board of Trustees. Made the decision to return from winter break for the first two weeks in distance learning

Presented Reopening update to Board of Trustees.





**AUSD has developed and implemented comprehensive reopening plans and protocols following local and public health department guidelines**

# AUSD Cases

- Placer Health reported the number of cases attributed to in person learning is significantly lower than community cases, our numbers would concur. Placer Health has no issue with schools increasing the instructional day
- 509 Students in Distance Learning Cohort C not including AVVA
- About 29% of total student population as reported by each principal and office staff (\*does not include the few students in quarantine)
- Since being open:
  - Staff = 14 positive (about 6%)
  - Students = 23 positive (about 1%)

Overall AUSD has less than 3% of staff and student positive cases



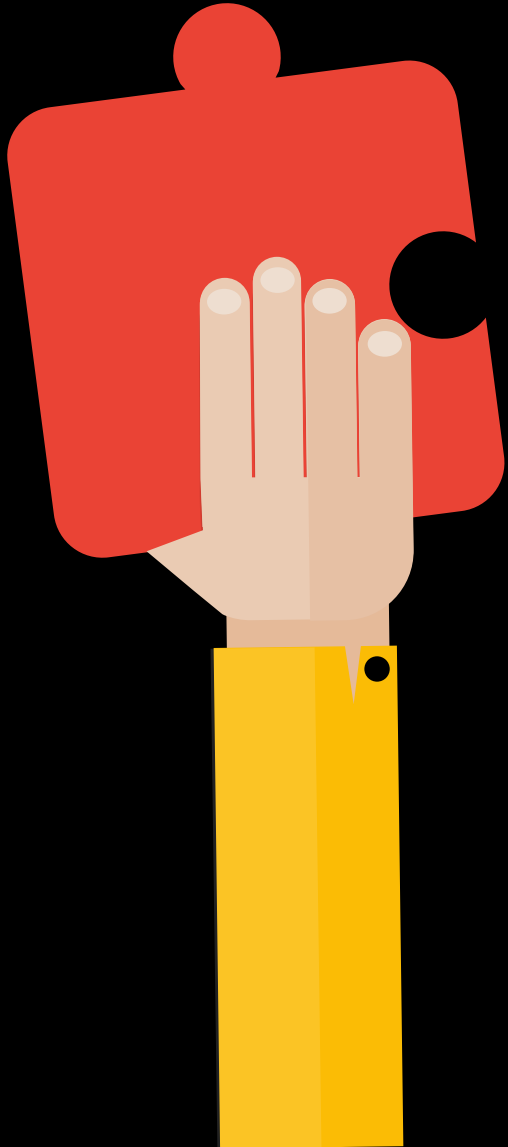
# Placer County Cases to 1-4-21 at 8:00 a.m.



Lab confirmed cases	14,687	
Total negative cases	212,414	
Deaths	132	1%
Age of Deaths	0-17 = 0 18-49 = 3 50-64 = 7 65+ = 121	0% 2% 5% 92%
Deaths with pre-existing medical conditions	119	90%
COVID confirmed cases in hospital who are Placer County residents	76	44%
COVID confirmed cases in ICU who are Placer County residents	18	10%
% of available ICU beds		27.4%
7 day case rate average per 100,000	40.5	
7 day case rate		12.2%

# California's Safe Schools for All Plan

- Plan has no impact on the ability to progress to Phase 3
- The plan is a proposal only. There will likely be many revisions before it is signed.
- There are additional dollars attached to this plan but the current requirements are unrealistic.
- New CDPH guidance will be coming out. However, the Health department stated no significant change in CDPH guidance
- Plan based on on science and includes four pillars:
  - Funding
  - Safety and mitigation
    - PPE
    - Testing
    - Contact Tracing
    - Vaccinations
  - Oversight and assistance
  - Transparency and Accountability



# California's Safe Schools for All Plan Rationale



- With the right precautions, we can minimize transmission in schools
- In-person instruction is critical for learning and growth

# California's Safe Schools for All Plan Science



- Children get COVID less frequently and have less severe disease
- Children with COVID most often get it from a household contact
- Transmission among and FROM students is uncommon
- Low risk of transmission in elementary schools

# California's Safe Schools for All Plan

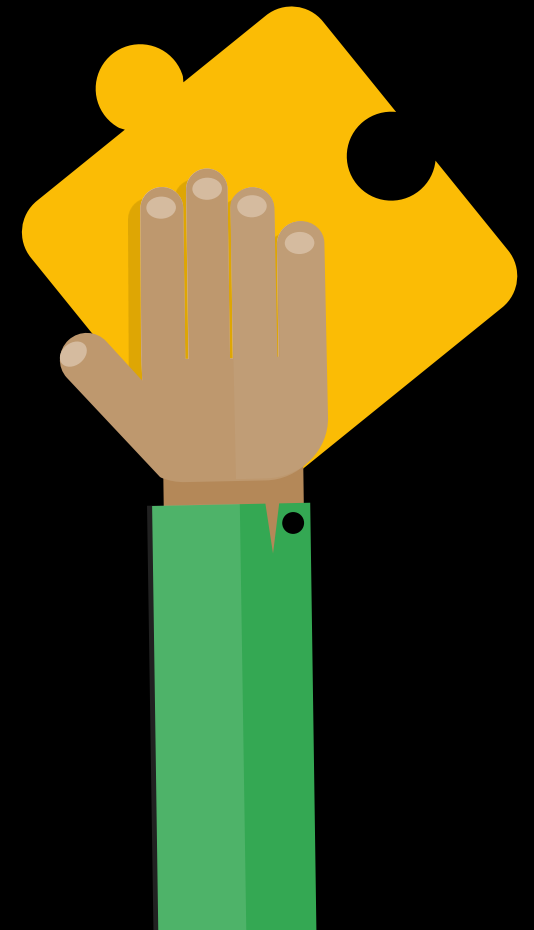
## The Science of What Not Do Has Taught Us What to Do



- Lesson on what not to do has taught us we need to have core strategies of:
  - Masks
  - Physical Distancing
  - Enhanced Ventilation
  - Symptom Screening

# What is a Modified Day?

- Cohorts A and B on campus
- School starts in the morning at regular start time
- Regular daily meeting to allow interaction between Cohorts A, B and C
- Grab and Go Lunch
- Live streaming only in daily meeting for elementary
- Dedicated focused instruction, enrichment and intervention with Cohort C in the afternoon

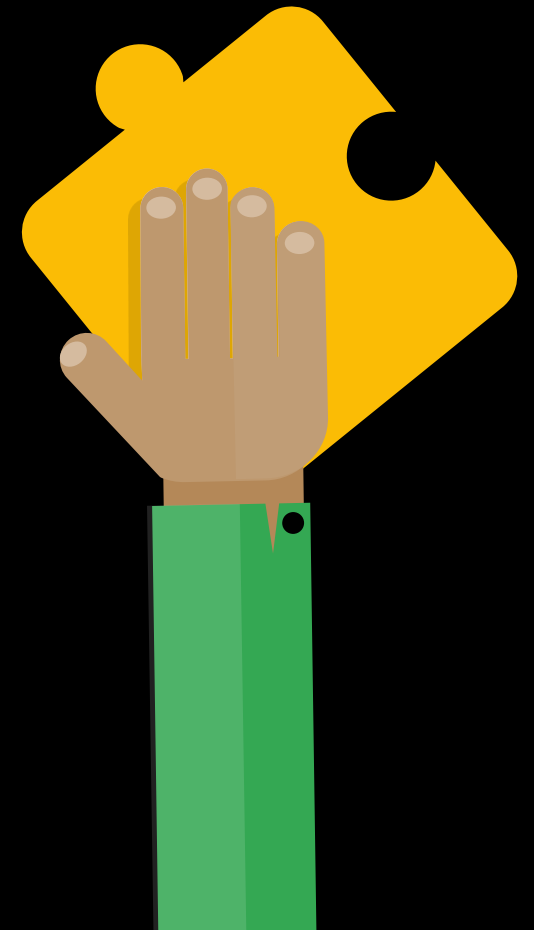




# Modified Day

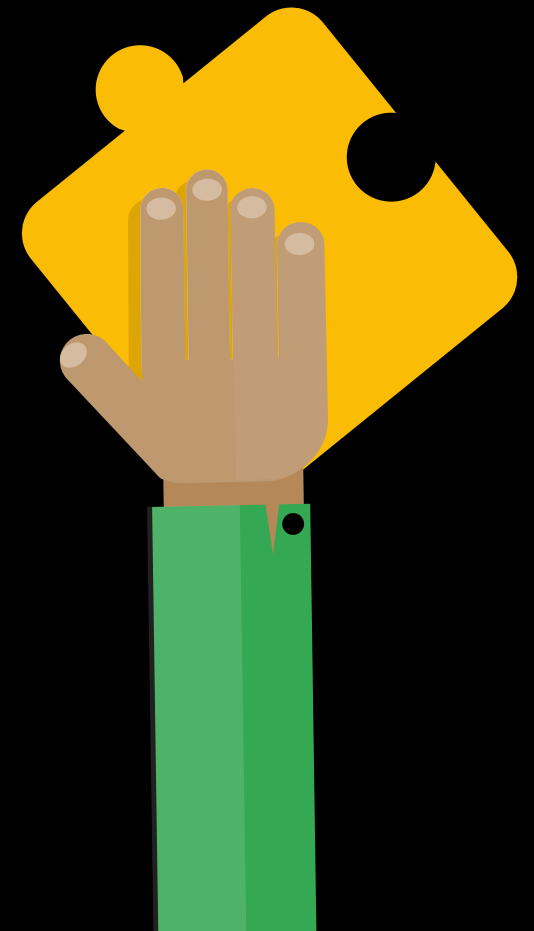
This schedule was made based on input from stakeholders including input from the AUTA Bargaining team.

Administration feels this is the best option given the current less than optimal circumstances.



# Benefits to Modified Schedule

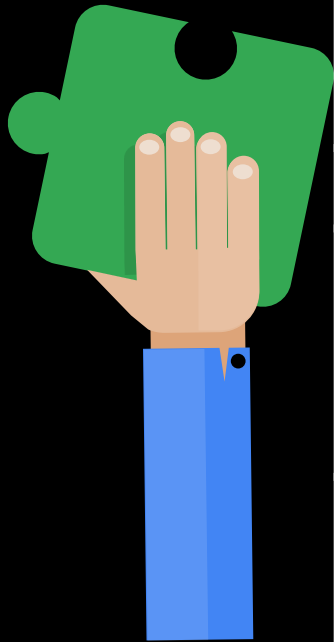
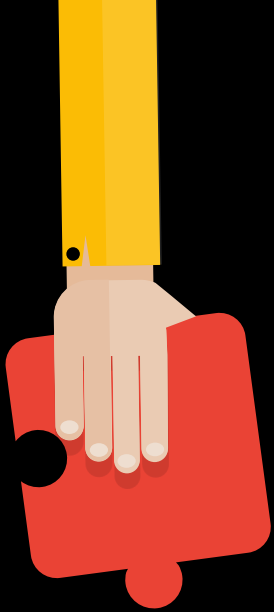
- Increased in-person instructional time - instructional time almost doubles from what it is now
- Students leave before lunch which reduces co-mingling of Cohorts during lunch
- Measured transition to full day instruction
- Increased identification and implementation of support services for all students
- Increased individual attention for Cohort C students
- Anecdotal evidence from other Placer County Superintendents report increased learning and social emotional wellness of students




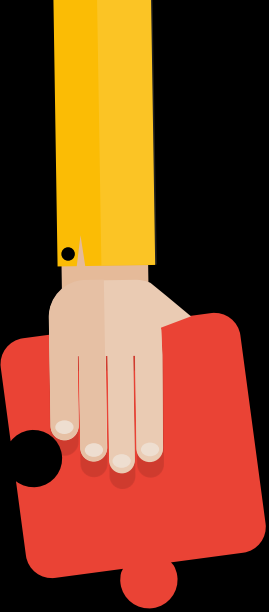
# Phase 3 Sample TK-5 Schedule

TK-5 SAMPLE	Monday (PLC)	Tuesday-Friday
Instructional Block 1 Cohorts A&B, C	(Morning) meeting	(Morning) meeting
Instructional Block 2 Cohorts A&B in person C asynchronous	In person instruction	In person instruction
Nutrition Break	Nutrition Break	Nutrition Break
Instructional Block 3 Cohorts A&B in person C asynchronous	In person instruction	In person instruction
Grab and Go Lunch		
Asynchronous Block 4 Cohorts A&B	Asynchronous work assigned to meet daily instructional minute requirements	Asynchronous work assigned to meet daily instructional minutes requirements
Distance Learning Cohort C	Online instruction for students working remotely Office Hours	Online instruction for students working remotely Office Hours

- 4 hours of in-person instruction for Cohorts A and B
- 90 minutes instruction for Cohort C
- Daily live virtual meeting for Cohorts A, B and C
- Nutrition Break
- Grab and Go Lunch
- Office Hours



# Phase 3 Sample 6-8 Schedule



Monday	Tuesday	Wednesday	Thursday	Friday
Homeroom	Homeroom	Homeroom	Homeroom	Homeroom
1	4/5	1	4/5	1
2	6	2	6	2
3	7	3	7	3
Grab and Go Lunch		Grab and Go Lunch		Grab and Go Lunch
Asynchronous Learning PLC (Staff)	Asynchronous Learning Office Hours	Asynchronous Learning Office Hours	Asynchronous Learning Office Hours	Asynchronous Learning Office Hours

- A/B Continuous Block Schedule
- 3 Periods per day
- 5 hours of in person instruction, similar to current schedule
- C Livestreams
- Nutrition Break during period 2 and 6
- Grab and Go Lunch
- Office Hours

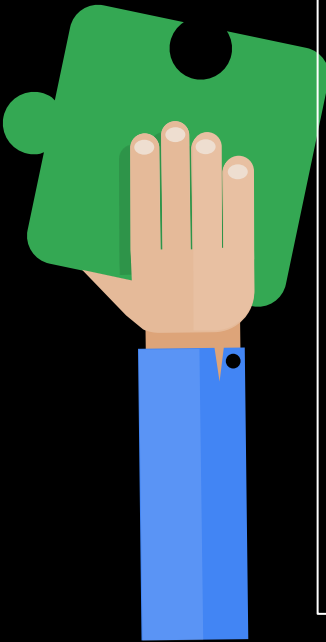
# Weekly in-person minutes more than double with a modified day schedule

	Hybrid	Modified 4 hours per day five days)	Full Day
TK	AVCC 470 SR 440 RC 520	1100 1100 1100	AVCC 1175 SR 1240 RC 1300
K	AVCC 470 SR 490 RC 560 AE 440	1100 1100 1100 1100	AVCC 1175 SR 1225 RC 1560 AE 1100
1-3	540	1100	AVCC 1490 SR 1490 RC 1485 AE 1490
4-5	550	1100	1535
6-8	570	1100	1605



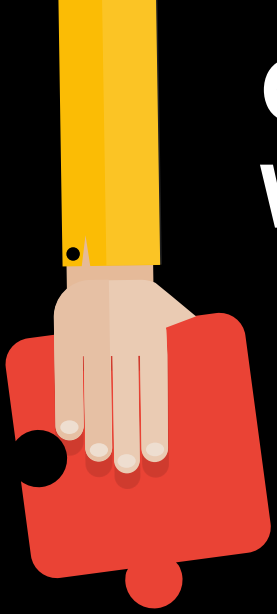
# Placer County's Guidance on Distancing in a Classroom Setting What distancing is required?

The California Department of Public Health guidelines for schools require schools to “maximize space between seating and desks.”

- 
- Distance teacher and other staff desks at least six feet away from student desks.
  - Consider ways to establish separation of students through other means if practicable, such as:
    - six feet between desks, where practicable
    - partitions between desks
    - markings on classroom floors to promote distancing
    - arranging desks in a way that minimizes face-to-face contact.

# Guidance on Distancing in a Classroom Setting

## What distancing is required?



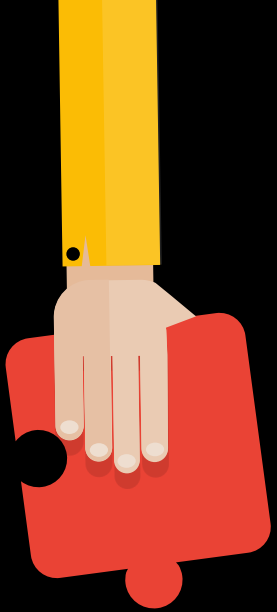
The American Academy of Pediatrics has indicated that desks should be placed at least 3 feet apart, and ideally 6 feet apart. If desks are spaced less than 6 feet apart, face coverings should be strongly encouraged and adhere to public health guidance.

**Schools should weigh the benefits of strict adherence to a 6-foot spacing rule between students with the potential downside if remote learning is the only alternative.**



# AUSD Measures to Mitigate Transmission

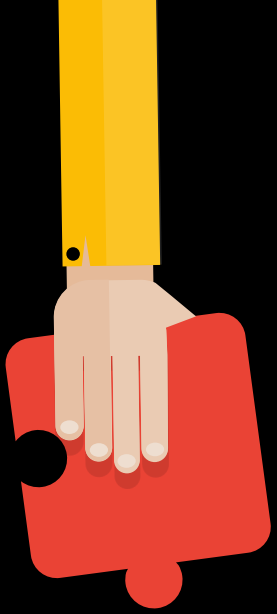
- Requirement of **all** students and staff to wear masks
- Symptom screening and tracking
  - District Nurse in collaboration with Placer Health created 10 different protocols, forms, flow charts for identifying, handling and notifying the appropriate people with COVID like symptoms. All employees have to sign that they've read and understand the materials
- Contact tracing
  - District Nurse created forms and spreadsheets to trace all close contacts of a positive COVID case
- Individual partitions for all students
- Partitions installed in offices





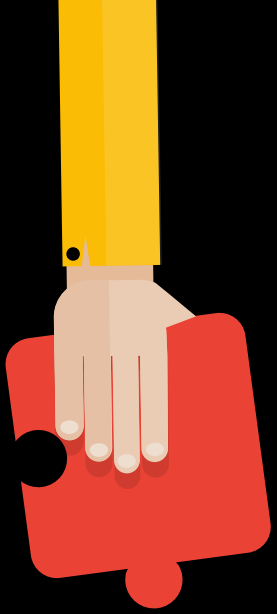
# AUSD Measures to Mitigate Transmission

- Distance teacher and other staff desks six feet away from student desks to the extent practicable
- Markings on classroom floors and around campus to promote distancing
- Arranging desks in a way that minimizes face-to-face contact
- Merv 13 filters in all classrooms
- Purchase of cameras in rooms to allow for distance learning
- Additional food safety measures
  - Increased distance for staff and students
  - Partitions
  - Additional PPE requirements
  - Protocols for handling food



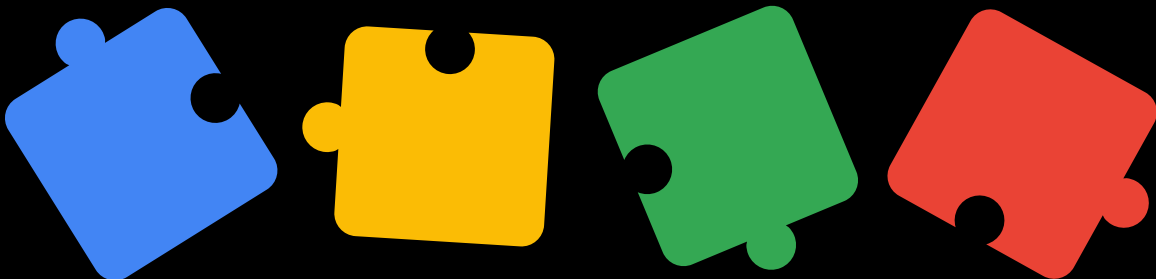
# AUSD Measures to Mitigate Transmission

- Increased cleaning
  - Purchased electrostatic sprayers for sanitization
  - Purchased Carpet Extractors for sanitizing carpeting
  - Purchased PPE for Staff & Students
  - Increased hand sanitizing stations
- Required of all staff a Daily Health Assessment



# Next Steps to Transition to Phase 3

- Receive direction from Board of Trustees
  - **Staff recommendation:**
    - **Transition to Phase 3 Modified Day Schedule commencing January 19 following guidance from Placer Public Health**
- Next Steps:
  - Monitor Placer County health data/case rates and collaborate with Public Health Department
  - Actively engage families/staff to stay safe and stay open
  - Continue to work and plan for full day instruction





**Thank You!**